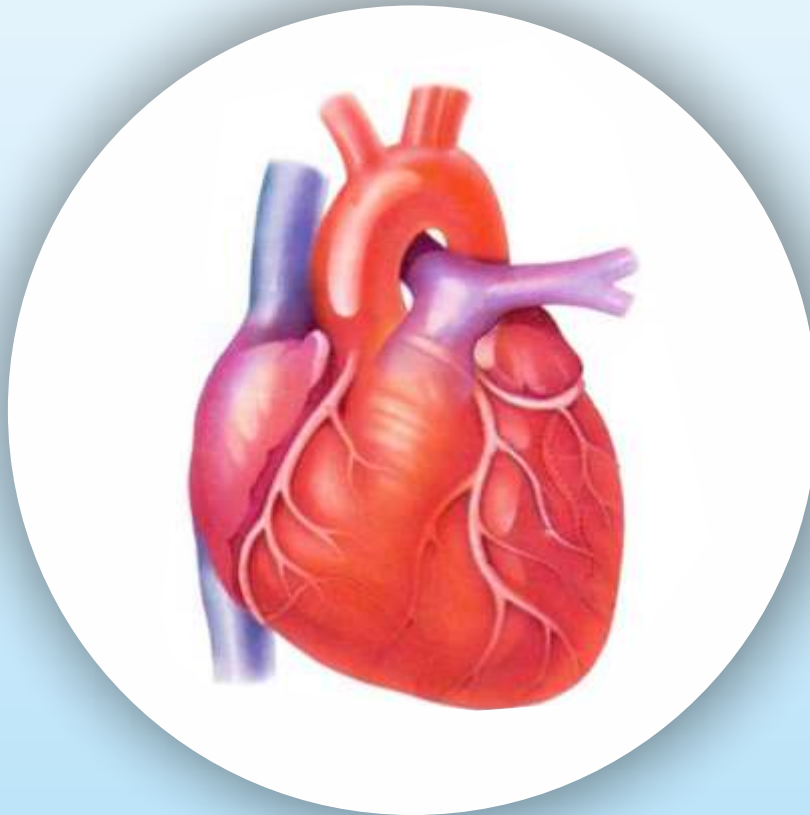


*Unique's*

# Cardiolek<sup>TM</sup>

Iodixanol



- **Non Ionic Dimer**
- **Iso osmolar Contrast Media**
- **Well Documented**
- **Less Cardiotoxic**

Unique's

# Cardiolek<sup>TM</sup>

## Iodixanol

Sr.No.	Brand Name	Composition	Iodine	Pack
1	CARDIOLEK - 150	Iodixanol USP 305 mg	150 mg/ml	20 ml , 50 ml , 100 ml , 200 ml
2	CARDIOLEK - 270	Iodixanol USP 550 mg	270 mg/ml	20 ml , 50 ml , 100 ml , 200 ml
3	CARDIOLEK - 320	Iodixanol USP 625 mg	320 mg/ml	20 ml , 50 ml , 100 ml , 200 ml

### DOSAGE CHART :

The following recommendations for an average dose for a normal adult may serve as a guide. The doses given for intra-arterial use are for single injections that may be repeated.

Indication/Investigation	Concentration	Volume
<b>Intra –arterial use</b>		
<b>Arteriographies</b>		
Selective cerebral	150/270/320 mg l/ml	5-10 ml per inj
Selective cerebral i.a.DSA	270/320 mg l/ml	40-60 ml per inj
Aortography	270/320 mg l/ml	40-60 ml per inj
Peripheral	270/320 mg l/ml	30-60 ml per inj
Peripheral i.a. DSA	150 mg l/ml	30-60 ml per inj
Selective visceral i.a DSA	270 mg l/ml	10-40 ml per inj
<b>Cardioangiography</b>		
Left ventricle and aortic root inj.	320 mg l/ml	30-60 ml per inj
Selective coronary arteriography	320 mg l/ml	4-8 ml per inj
<b>Intravenous use</b>		
Urography	270/320 mg l/ml	40-80 ml
Venography	270 mg l/ml	50-150 ml/leg
<b>CT-enhancement</b>		
CT of the head	270/320 mg l/ml	50-150 ml
CT of the body	270/320 mg l/ml	75-150 ml



Further information available on request from:  
Diagnostic Division

**J. B. CHEMICALS & PHARMACEUTICALS LIMITED**

Energy IT Park, Unit A2, 3<sup>rd</sup> Floor, Unit A, 8th Floor, Appa Saheb Marathe Marg, Prabhadevi,  
Mumbai - 400 025. Phone: +91 22 2439 5200 / 2439 5500. Website: www.jbcpl.com

For the use of a Registered Medical Practitioner  
or a Hospital or a Laboratory only.